

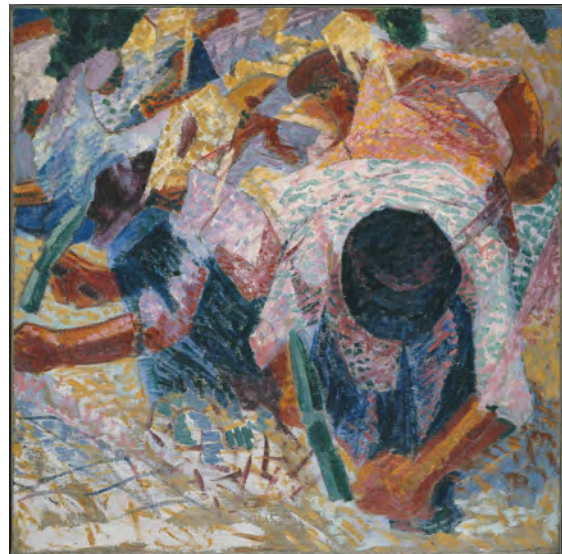
## UPCOMING EVENTS

December 4-5, 2015, Los Angeles, California

### LABOR SOLIDARITY ACROSS BORDERS

RLS–NYC is co-organizing a gathering, bringing together trade union representatives from key sectors of the North American economy—from autoparts to energy, from green industries to mining and steel, and from agriculture to cross-border organizing. You can find more details about this event on our [website](#).

This event is co-hosted by the UCLA Downtown Labor Center and the Institute for Transnational Social Change.



---

## NEW PHOTOS

### THE FALL OF THE BERLIN WALL: 25 YEARS AFTER



Together with the New School, we organized a two-part event to critically commemorate German unification, consisting of the U.S. premiere of the play “1989 [Exit Ghost],” performed by the Dresden-based troupe *theatrale subversion*, and a public conference. Check out the pictures on our [Flickr page](#).

## GLOBAL CONVERGENCES



From Nov. 21-22, “Global Convergences: Strategies Against Evictions and Displacement,” co-sponsored by RLS–NYC and MIT’s Displacement Research and Action Network (DRAN), brought together housing and land rights activists and leading experts from around the world. Browse through the photos [here](#).

## FIGHTING DISPLACEMENT: A TRANSATLANTIC ROUNDTABLE



RLS–NYC and the Right to the City Alliance USA recently convened a closed-door roundtable on displacement and housing justice to provide an opportunity for urban activists and experts to meet and share best practices. You can find the [pictures](#) on Flickr and the [report](#) on our website.

---

## NEW VIDEO SERIES

### WEAK SPOTS OF NEOLIBERALISM: PARTS 1-4

One hundred leaders of the left from North America and Europe gathered August 1-4 in upstate New York for “Mapping Socialist Strategies.” Check out this series of panels on case studies that highlight weak spots of neoliberalism.

#### [Part 1: Challenging the Keystone XL Pipeline and the Tar Sands](#)

With Lara Skinner (The Worker Institute, Cornell University) and Clayton Thomas Muller (Indigenous Tar Sands Campaign)

#### [Part 2: Before and After Chowke Lumumba](#)

With Kali Akuno (Cooperation Jackson) and Elandria Williams (Highlander Research and Education Center)

#### [Part 3: The Rise of the Radical Left in Greece](#)

With Ioannis Bournous and Giorgos Karatsioubanis (both from SYRIZA)

## [Part 4: The Chicago Teachers Strike of 2012](#)

With Marilena Marchetti (Chicago Teachers Union) and Ethan Young (Left Labor Project, NYC)

---

## NEW PUBLICATIONS

### RACE TO THE RIGHT?

Analyzing the Midterm Elections 2014

Ethan Young - November 2014

[Download here](#)

### WETTLAUF NACH RECHTS?

Eine Analyse der US-Kongresswahlen 2014

Ethan Young - November 2014

[Download here](#)



And forthcoming:

## CONFRONTING DEVELOPMENT

A Critical Assessment of the UN's Sustainable Development Goals

By Barbara Adams and Kathryn Tobin - December 2014

English - Deutsch - Espagnol

---

*Copyright © 2014 Rosa Luxemburg Stiftung—New York Office, All rights reserved.*

The Rosa Luxemburg Stiftung is an internationally operating,  
progressive non-profit institution for civic education.

ROSA LUXEMBURG STIFTUNG | NEW YORK OFFICE  
275 Madison Avenue, Suite 2114 New York, NY 10016 | [info@rosalux-nyc.org](mailto:info@rosalux-nyc.org) | (917) 409-1040

[unsubscribe from this list](#) [update subscription preferences](#)